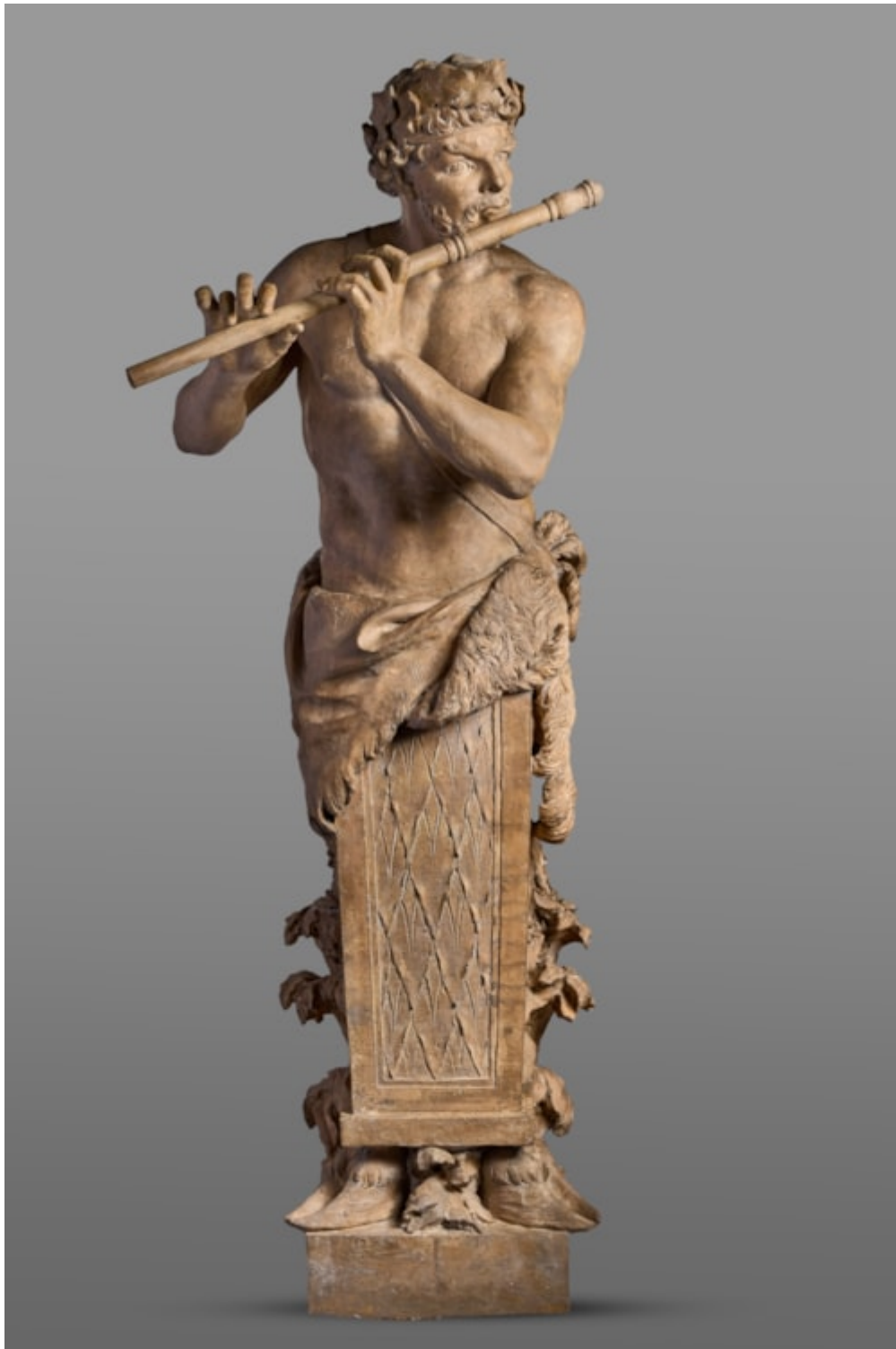


Costermans
S i n c e 1 8 3 9



ANTOINE COYSEVOX
(1640 - 1720)

The flute-playing faun after Antoine Coysevox

1 9 0 x 7 0 x 6 2 0 5/8 in (c7h4e s³)/

F r a n c e e i g h t e e n t h c e n t u r y
T h e f l u t e - p l a y i n g f a u n

T e r r a c o t t a

F r a n c e , e i g h t e e n t h c e n t u r y .

H e i g h t 1 9 0 c m ; W i d t h 7 0 c m ; D e p t h 6 0

A n i m p o r t a n t t e r r a c o t t a s c u l p t u r e o f
c r o s s e s t h e b u s t h o l d s a l i o n s k i n o f
a n t h r o p o m o r p h i c s c u l p t u r e a n d t h e l o w
s t y l i s e d l e a v e s . T h e f a u n ' s a t t r i b u t e s
t w o g o a t ' s f e e t r e s t i n g o n a s m o o t h s

T h e m o d e l f o r t h i s s c u l p t u r e c o m e s f r o m
(1 6 4 0 - 1 7 2 0) . T h i s w a s m a d e i n m a r b l e
g a r d e n s o f t h e C h â t e a u d e M a r l y . I t e n